



## Quick-Lift Arm

QLA 75i

Lifts up to 75 kg



Intelligent lifting devices that meet high demands for ergonomics, working environment, safety and efficiency

Outstanding balancing mode  
– independent of load

Increased flexibility  
– easier to integrate more safe end effector functions

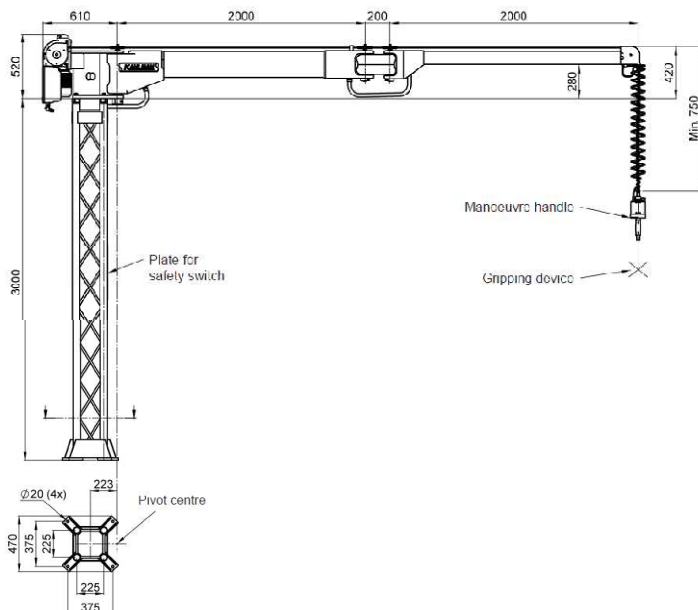
Unbeatable precision  
– unique responsiveness provides efficient handling

Cost effective  
– increased accessibility, reduced energy consumption, long durability

Improved PC software  
– simplifies lift configuration



Lifting capacity	Max 75 kg
Lift motor	Stepless servo-controlled asynchronous motor
Manoeuvring	Manoeuvring is done by using KAHLMAN'S patented manoeuvring handle or balancing mode. Both options sense the operator's hand/arm movement and give a very exact and smooth speed control. Only a force equivalent to 20 gram is needed to engage the up/down motion. When the operator let go of the handle or object, the up/down motion is immediately stopped.
Power supply	230V, 50-60 Hz, 1-phase with ground protection, 10A
Stroke length	2,7 meter
Hinged arm	Made in painted aluminium profiles. Standard length 4.2 m. Other lengths can be quoted on customer's request. The position of the fixated lifting motor is carefully designed and tested to give optimum manoeuvrability of the hinged arm.
Suspension	Floor pillar in painted steel with a standard height of 3 m. Optional pillar heights up to 5 m depending on customer's need. Also available is a wall or ceiling mounted bracket in painted steel.
Gripping device	Grippers are designed to fit customer's need. Intelligent I/O signals are available for optimum functionality. Easy accessible USB communication as standard.



## Quick-Lift Rail

QLR 125i

Lifts up to 125 kg



Intelligent lifting devices that meet high demands for ergonomics, working environment, safety and efficiency

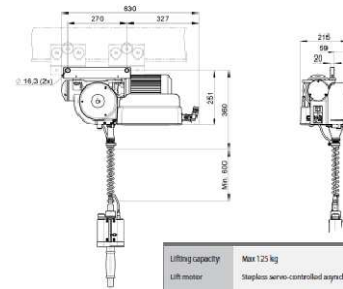
Outstanding balancing mode  
– independent of load

Increased flexibility  
– easier to integrate more safe end effector functions

Unbeatable precision  
– unique responsiveness provides efficient handling

Cost effective  
– increased accessibility, reduced energy consumption, long durability

Improved PC software  
– simplifies lift configuration



Lifting capacity	Max 125 kg
Lift motor	Stepless servo-controlled asynchronous motor
Unit weight	28 kg

Quick-Lift System Arm = QLA35i, QLA75i, QLA125i, QLA300 – Quick-Lift Rail = QLR125i, 35 kg = 75 lbs, 75 kg = 165 lbs, 125 kg = 275 lbs, 300 kg = 660 lbs.

**Jenalex Inc**

Email: [info@jenalex.ca](mailto:info@jenalex.ca)

Web: [www.jenalex.ca](http://www.jenalex.ca)

3266 Yonge Street, # 1711

Fx: 416-485-7417

[www.quick-lift.ca](http://www.quick-lift.ca)

Toronto, ON M4N 3P6

Ph: 416-485-9487

Ph: 800-JENALEX (536-2539)