



Protema electric lift PRO70

SPECIFICATIONS:	
Art nr (excluding platform):	8PRO70 / 8PRO703 / 8PRO705
Max. load	70 kg (154 lbs) with centre of load @ max 300 mm (11.81") from mast
Min. lifting height	Platform 8525: Floor level, less platform height 30 mm (1.18") Platform 8562: 140 mm (5.51") Boom 8516: 320 mm (12.6")
Max. lifting height 8PRO70 / 8PRO703 / 8PRO705	Platform 8525: 1150 mm (45.3") 1450 mm (57.1") 1650 mm (65.0") Platform 8562: 1260 mm (49.6") 1560 mm (61.4") 1760 mm (69.3") Boom 8516: 1440 mm (56.7") 1740 mm (68.5") 1940 mm (76.4")
Stroke	8PRO70: 1120 mm (44.1") 8PRO703: 1420 mm (55.9") 8PRO705: 1620 mm (63.8")
Weight of unit	30-33 kg (66-73 lbs)
Lifting speed	0,085 m/s
Charging voltage	120/240 V AC 40 W
Battery voltage & capacity	24V DC 7Ah
Lifting capacity/charge	100 x 70 kg x 1m
Total height	8PRO70: 1563 mm (61.5") 8PRO703: 1863 mm (73.3") 8PRO705: 2063 mm (81.2")
Wheels	Front Ø60 mm (2.36") rear Ø125 mm (4.92")



Protema PRO70 handles weights up to 70 kg (154 lbs).

Available in three different lifting heights.

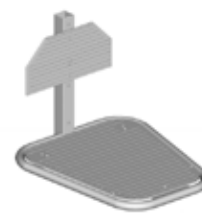
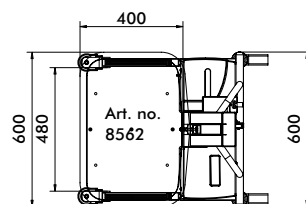
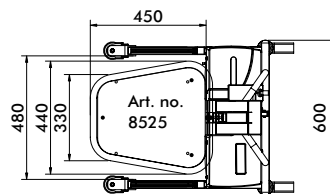
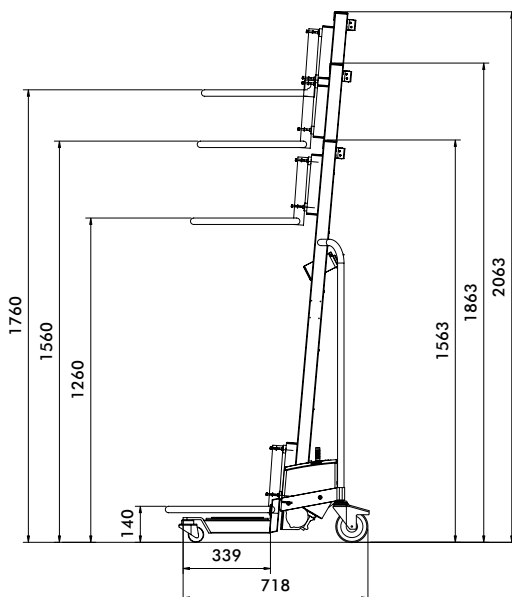
Powerpack with built-in charger (120/240 V AC) and overload protection.

Front legs fitted with emergency stop switches that will stop the platform automatically, if activated.

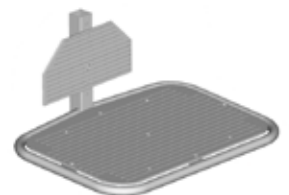
Ball and needle bearing front wheels.

Other attachments available: V-block and rotating platform for roll handling, loading rollers, built-in ladder etc.

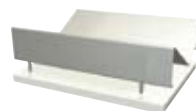
CE Cert. 08-SKM-CM-0121



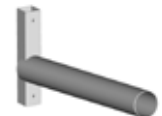
Platform 8525



Platform 8562



V-block 8161A and rotating plate 8162A, rollhandling



Boom, rollhandling, 8516



Coregripper 8291