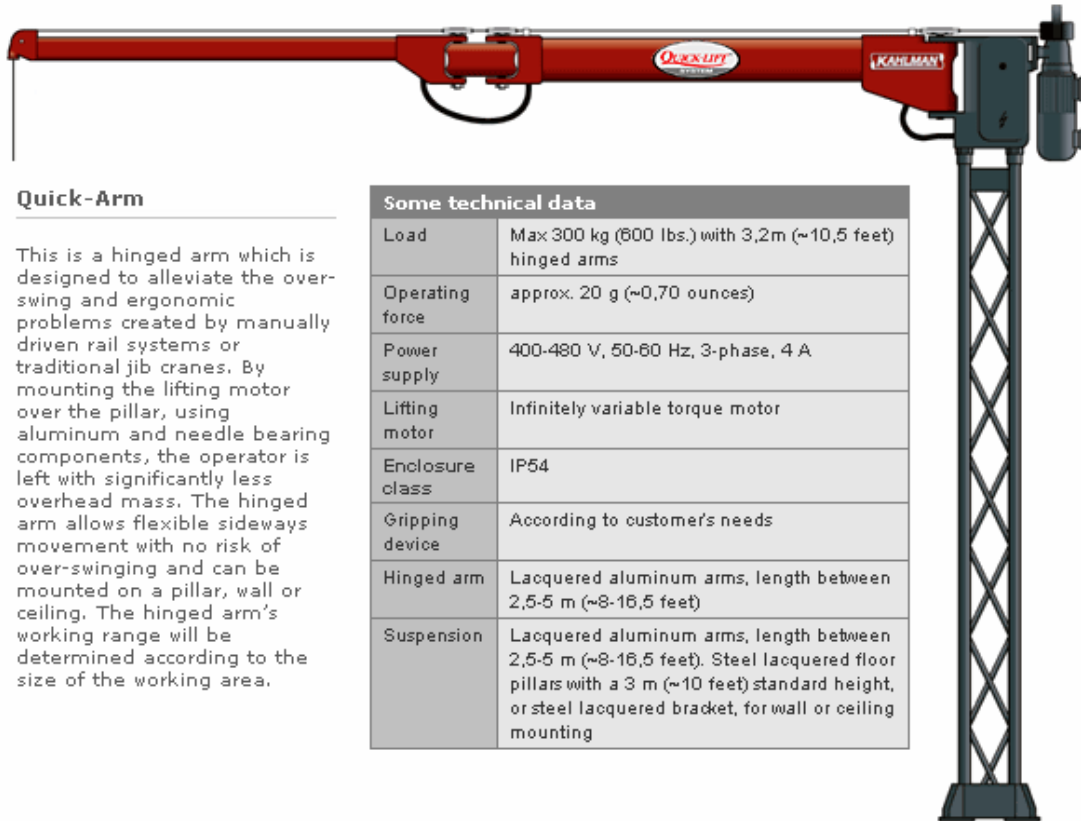


Transform kilograms to grams with a gentle handgrip!

Kahlman's lift equipment with their patented maneuver handles sense the hand's motions and boosts the lifting power - a heavy motor block or five beverage crates are handled as easily and smoothly as a 20-gram letter!

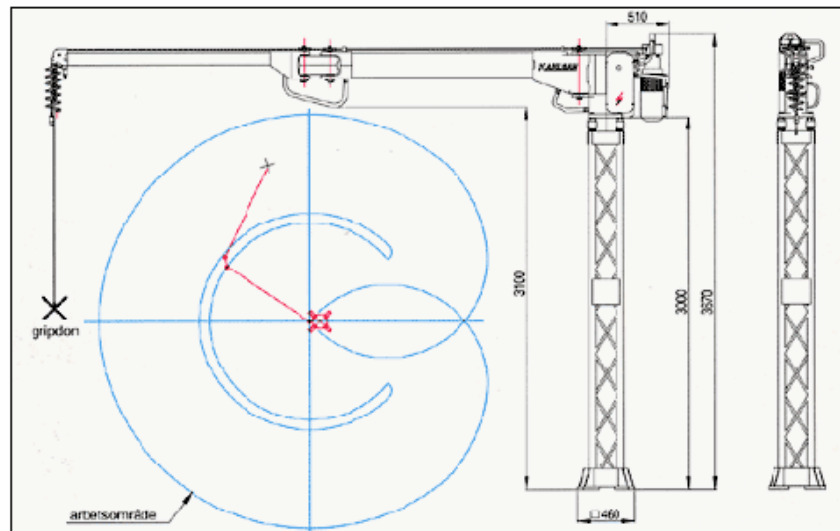


Quick-Arm

This is a hinged arm which is designed to alleviate the over-swing and ergonomic problems created by manually driven rail systems or traditional jib cranes. By mounting the lifting motor over the pillar, using aluminum and needle bearing components, the operator is left with significantly less overhead mass. The hinged arm allows flexible sideways movement with no risk of over-swinging and can be mounted on a pillar, wall or ceiling. The hinged arm's working range will be determined according to the size of the working area.

Some technical data

Load	Max 300 kg (600 lbs.) with 3,2m (~10,5 feet) hinged arms
Operating force	approx. 20 g (~0,70 ounces)
Power supply	400-480 V, 50-60 Hz, 3-phase, 4 A
Lifting motor	Infinitely variable torque motor
Enclosure class	IP54
Gripping device	According to customer's needs
Hinged arm	Lacquered aluminum arms, length between 2,5-5 m (~8-16,5 feet)
Suspension	Lacquered aluminum arms, length between 2,5-5 m (~8-16,5 feet). Steel lacquered floor pillars with a 3 m (~10 feet) standard height, or steel lacquered bracket, for wall or ceiling mounting



Jenalex Inc

Call Toll Free: 1-800-536-2539

www.jenalex.ca